



CEDAR HILL

2023

TRASH & RECYCLING SERVICE GUIDE



FIND INSIDE

- **Collection Schedule & Map**
- **Know What to Throw: Recycling & HHW**
- **2023 Holidays**

[CEDARHILLTX.COM/TRASH](https://cedarhilltx.com/trash)

WASTE 101: TRASH & RECYCLING BASICS

Waste Management provides trash and recycling services for the City of Cedar Hill. Please contact Waste Management Customer Service at 972-315-5400 for trash and recycling issues.

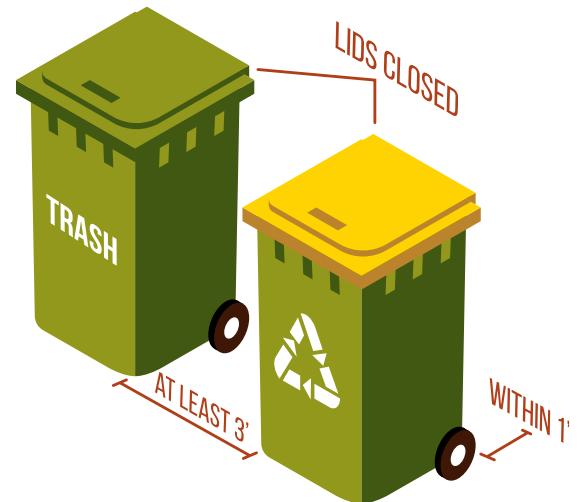
Trash and recycling are collected once per week, and bulk items and green waste are collected once per month (see the map inside for your collection schedule).

Each single-family home is provided a green 96-gallon cart with a **yellow lid** for recyclable materials and a green 96-gallon cart with a **green lid** for household trash. Residents are responsible for cart care. All trash and recyclable materials must be inside the cart with the cart lid properly closed. Materials left outside carts on collection day, bagged or not, will not be collected. Recycling carts will not be collected if they contain anything but acceptable recyclable materials (see inside for details). Only Waste Management carts are serviced. Any other containers will not be serviced.

Carts must be placed at the curb—or in the alley, if an alley collection—by 7 a.m. on your collection day. Carts may be set out after 6 p.m. or one hour before sunset the night

CART PLACEMENT INSTRUCTIONS

- Place carts **within one foot** from the curb—or fence, if in an alley—with the handles facing the home or fence.
- Give carts plenty of space. The automated control arms need at least three feet of space on all sides of your carts in order to pick them up. Keep trash and recycling carts at least **three feet apart** and at least **five feet** from cars, mail boxes, gas meters, and other nearby objects.
- Trash must be contained. Place your trash in securely tied plastic bags. All bags must fit **inside** the cart with the lid closed. Any trash left on top of or beside the cart will not be collected.
- Set it out **by 7 a.m.** on your collection day.



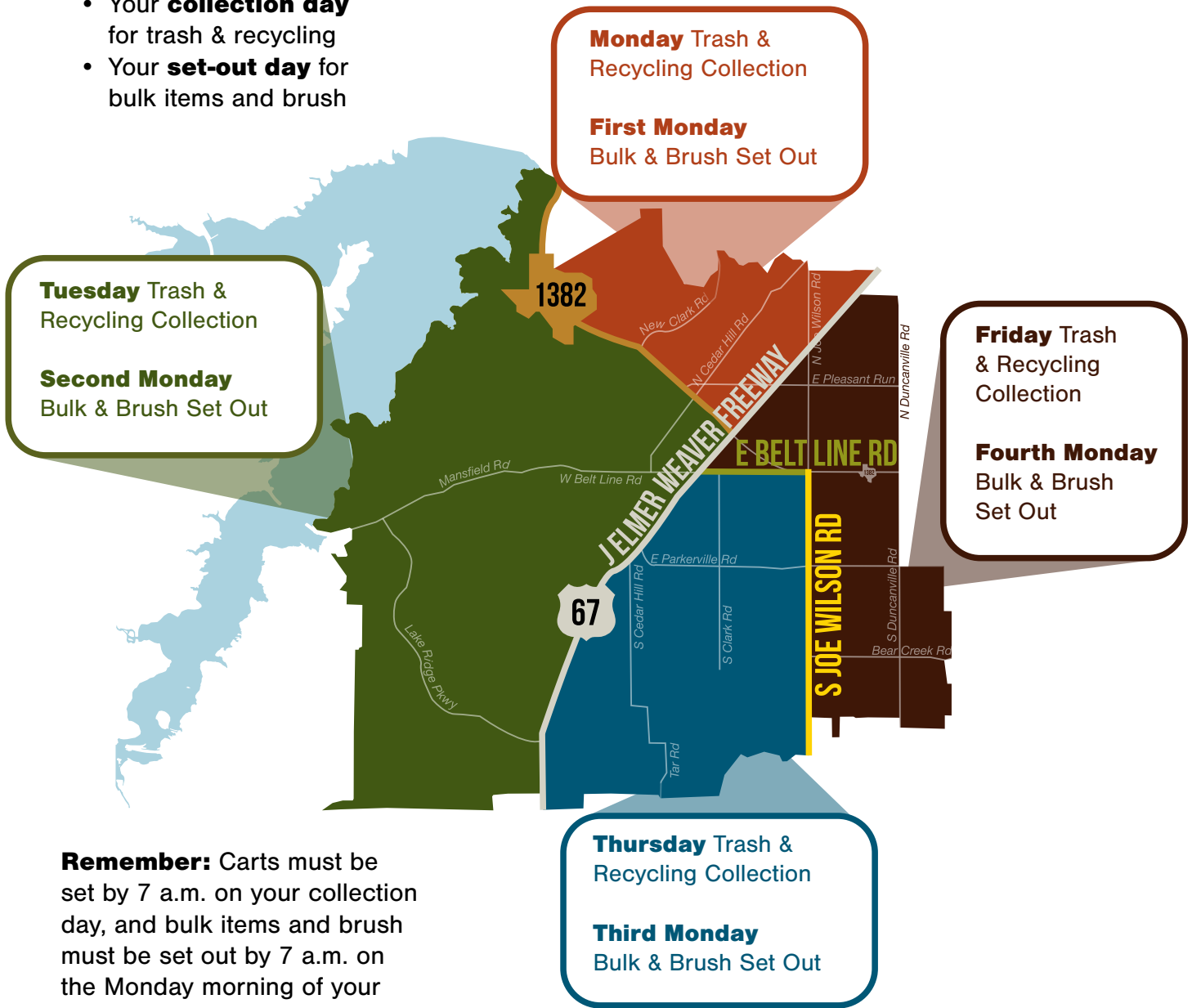
IMPORTANT NOTE ABOUT PARKING

Parking too close to the alleyway can block trash-collection vehicles from servicing your home. Make sure all visitors and residents park more than **25 feet** from the alley entrance/exit on both the alley side of the street and the opposite side of the street. (City Ordinance No. 2019-674)

COLLECTION SCHEDULE & MAP

Use this map to identify:

- Your **collection day** for trash & recycling
- Your **set-out day** for bulk items and brush



Remember: Carts must be set by 7 a.m. on your collection day, and bulk items and brush must be set out by 7 a.m. on the Monday morning of your collection week.

HOLIDAYS & INCLEMENT WEATHER

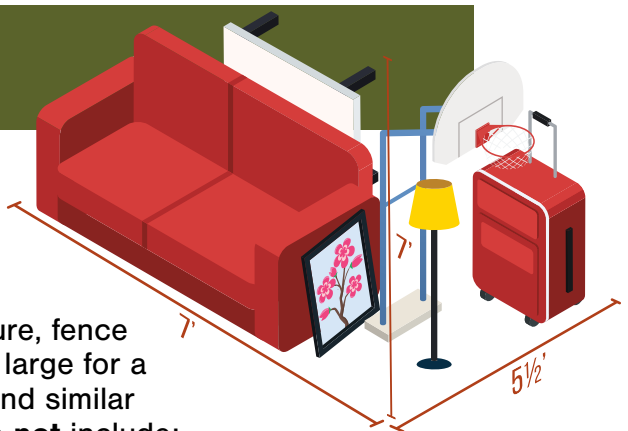
WM observes three holidays: Thanksgiving Day, Christmas Day, and New Year's Day. For **Thanksgiving**, Thursday collections will be serviced on Friday, and Friday collections will be serviced on Saturday. For **Christmas and New Year's Day**, Monday collections will be serviced on Tuesday, and Tuesday collections will be serviced on Wednesday.

Service may also be impacted due to inclement weather, find updated information and sign up for service alerts and reminders at cedarhilltx.com/trash.

BULK & BRUSH

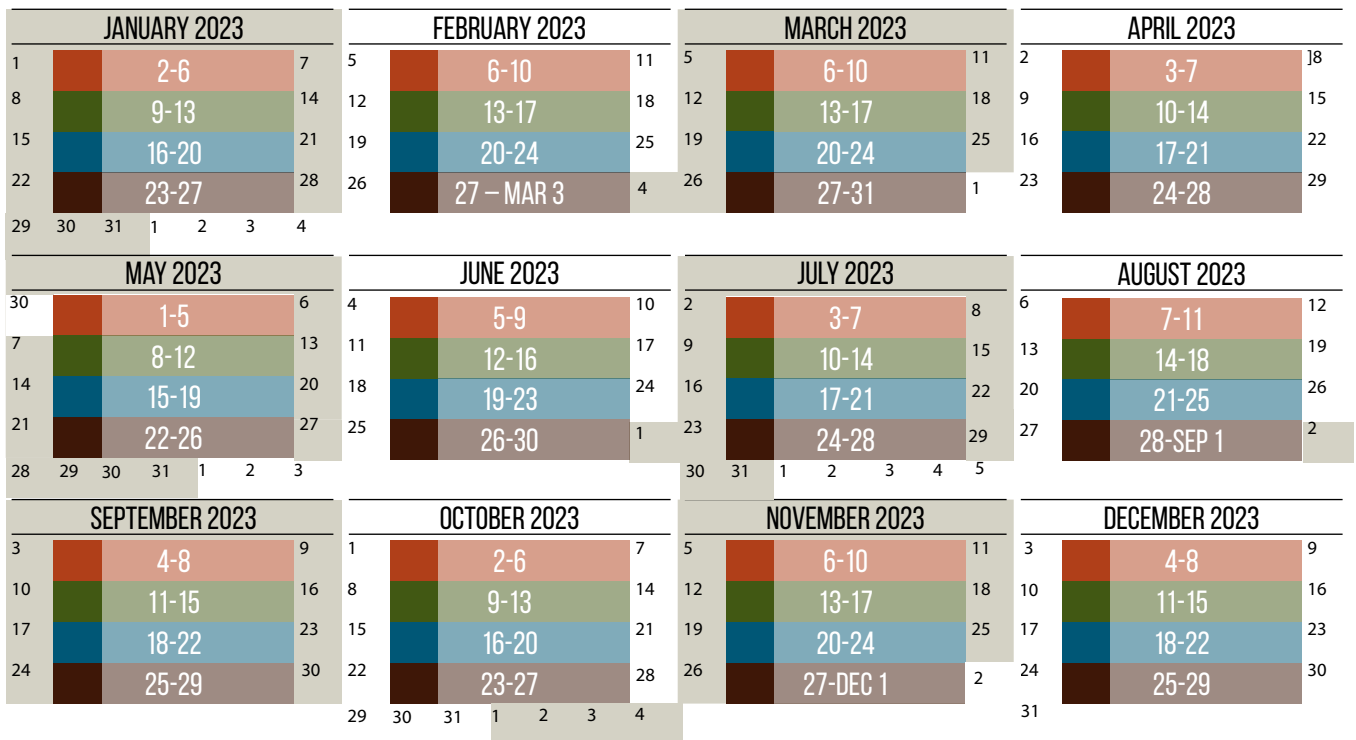
Bulk items and brush are collected together in one pile once per month at the curb (even if you have an alley) and are limited to 10 cubic yards.

Acceptable bulk items include: appliances, furniture, fence sections, bags of leaves or other residential items too large for a container. Refrigerators, freezers, window A/C units, and similar items must be tagged as “free of freon”. Bulk items do **not** include: construction debris; toilets; hazardous waste; vehicles, parts, or tires; televisions or computers.



Example of 10 cubic yards of bulk items

Bulk items and brush must be placed at the curb **by 7 a.m. on the Monday morning of your collection week.** Waste Management may collect your items any day of the scheduled week. Refer to the Collection Schedule & Map to determine your set-out day and collection week, which are color coded below for each month.



DIY DISPOSAL (LANDFILL)

Once per quarter, at no cost, residents may take materials such as fencing, brush, and construction debris to the Waste Management landfill, 1201 N Central Avenue, Ferris, TX. The maximum quantity for disposal at no charge is **three cubic yards per visit**.

Residents will need to present their **most recent utility bill** and a **driver's license** with the same address shown on the bill. The landfill is open from 6 a.m. to 4 p.m. on weekdays and from 6 a.m. to noon on Saturdays. (The landfill is closed Thanksgiving Day, Christmas Day, and New Year's Day).

RECYCLE RIGHT™

Every time you choose to recycle, you are giving that item a second life to serve a new purpose and save natural resources. Now more than ever it's important that only the right items, free from contamination, make their way into your recycling bin to help keep recycling, and our shared planet, sustainable.

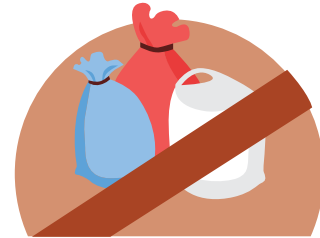
It's time to get back to the basics. The fact is that some recycling actions make a bigger impact than others. So please **remember these three basic rules** the next time you recycle.



Recycle clean bottles, cans, paper, and cardboard.



Keep food and liquid out of your recycling



No loose plastic bags and no bagged recyclables.



HAZARDOUS WASTE AT YOUR DOOR

Residents can now schedule home pick up for unwanted household hazardous waste materials through Waste Management's At Your Door Special CollectionSM.



Automotive Products

Antifreeze, batteries, brake fluid, motor oil and filters, fuels and more



Paint Products

Caulk, glue, paint, spray paints, stains, strippers & thinners



Electronics

Music players, TVs, DVD/CD Players, VCRs, cell phones, microwaves, computers



Garden Chemicals

Fertilizers, insect sprays, herbicides, pesticides & weed killers



Household chemicals

Ammonia, heavy-duty cleansers, shower/tile cleaners, drain cleaners



Household Items

Batteries, compact fluorescent lamps (CFL), thermometers, thermostats, syringes & lancets

To schedule a home collection, visit WMAAtYourDoor.com or call 800-449-7587 (M-F, 7 a.m. to 7 p.m.)

MATERIAL THAT WILL NOT BE COLLECTED: ammunition, medicine, explosives, asbestos, tires, materials in leaking containers, commercial chemicals or hazardous materials in containers larger than five gallons in size. For qualified residents of contracted community. Acceptable materials are based upon Federal, State and local regulations.

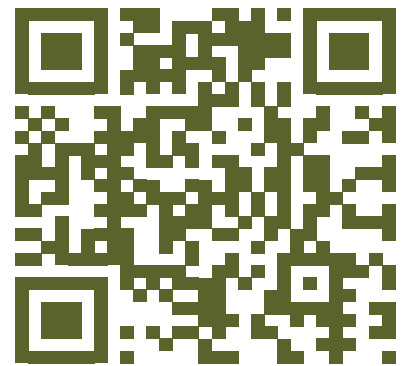


520 E. Corporate Drive, Suite 100
Lewisville, TX 75057

IMPORTANT INFORMATION INSIDE

**about updates to your residential trash,
recycling, and bulk item collection services.**

Para información en Español, llame 469-272-2931, opción 1.



SCAN ME

Sign up for service reminders and
alerts via text, email, or phone at

CEDARHILLTX.COM/TRASH

